

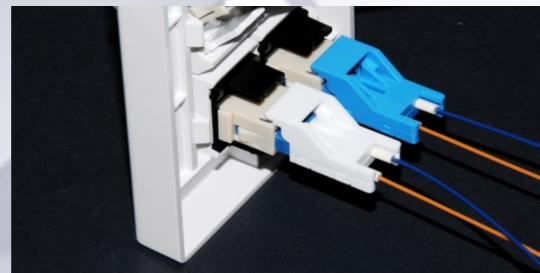
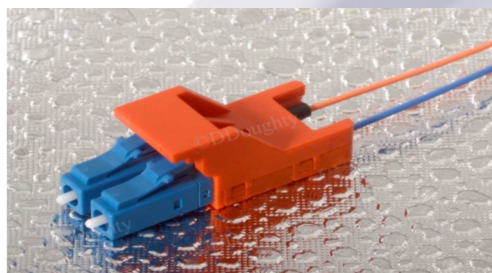


Secure LC Behind The Wall Connectors

SLC 'BTW' Connectors

OFP's unique patented **Secure LC connectors** are designed to prevent unauthorized and inadvertent changes in highly sensitive applications such as Datacenters and Secure IT networks where multiple physical layer classifications may exist.

The **BTW Secure LC connectors** used for **900um secondary coated** fibers are designed to plug to any industry compliant LC adaptors or active device ports and **cannot be disconnected without a special extraction tool**.



Applications

- To secure the connectivity of 900um pigtailed to the 'inside' of enclosures
- Military IT Networks
- Secure Federal IT Networks
- Commercial Data Centers & Telco
- Private Networks
- Industrial Process Control

Features

- Secure LC locks to port once plugged — keyed tool required for extraction
- 8 key combinations with separate colors plus administrator key option.
- Compact design for wall-boxes, floor boxes and the inside panel of equipment racks
- Designed for field splicing of pigtailed or on-site termination
- Dust cap "discipline" feature

Optical Fiber Packaging Ltd.

Hollands Road
Industrial Estate
Haverhill
Suffolk
England CB9 8PR UK

Phone: +44 (0) 1440-766636
E-mail: sales@ofpgco.com

The BTW connectors can be purchased as pre-terminated 3m pigtail kits for field splicing or as components for direct field termination.

The extraction tools allow for easy manual connector removal even from very high density patch panels and are color coded to match the connector key type. The **connectors plug to both duplex and quad adaptors**.

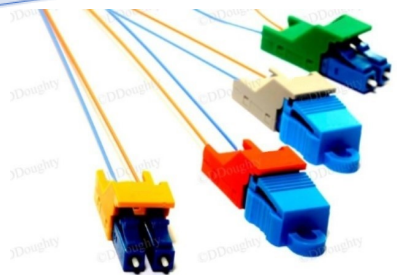
An additional product novelty is the custom dust cap required to remove a connector from an extraction tool and hence promoting good 'fiber' discipline

Secure LC Patent Application No.0903326.7

www.ofpgco.com



Secure LC Behind The Wall Connectors



Pro Terminated Pigtaills



BTW Connector Kit

Connector Property	Singlemode	Multimode
Insertion Loss	0.10dB typical	0.20dB typical
Return Loss	≥ 55dB typical for UPC	–
Durability	< 0.2dB change 500 cycles	< 0.2dB change 500 cycles
Operating Temperature	-40°C to +70°C	-40°C to +70°C
Ferrule Criteria	125.5µm +1/-0 Concentricity: ≤ 1µm	127µm nominal
Connector Part Number	CON-XX-0YS	CO-XX-0YM

Contact OFFP for price and part numbers for Pre-terminated Duplex SLC Splicing Pigtaills



Extraction Tools



Port Plugs

Key/Housing Color	Connector dash No. XX	Extraction Tool No.	Locking Port Plug
Black	-12-	T0010121-12	PLG10271-12
Red	-13-	T0010121-13	PLG10271-13
Green	-14-	T0010121-14	PLG10271-14
Blue	-15-	T0010121-15	PLG10271-15
Grey	-16-	T0010121-16	PLG10271-16
White	-17-	T0010121-17	PLG10271-17
Orange	-18-	T0010121-18	PLG10271-18
Yellow	-19-	T0010121-19	PLG10271-19
Purple	Administrator Tool	T0010121- 11	-

Y in connector part code designates boot colour. Black = 2, White = 7, Beige = 8, Aqua = 4, Blue = 5

Replacement Connector Dust Cap - Part number CAP10122-01

RoHS Directive Compliant .Conforms to GR-326. Flammability: UL 94 V-0 Grade

WWW.OFFPGCO.COM

Optical Fiber Packaging Ltd.

Hollands Road
Industrial Estate
Haverhill
Suffolk
England CB9 8PR UK

Phone: +44 (0) 1440-766636
E-mail: sales@offpgco.com