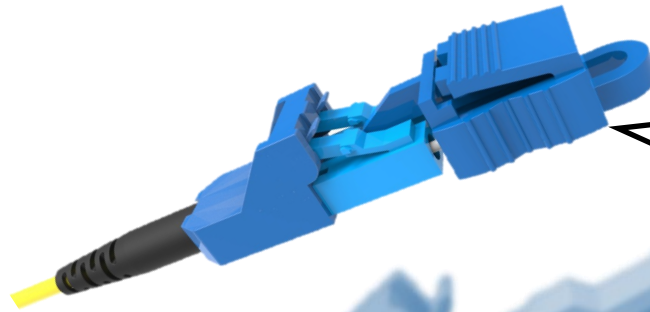




Secure LC Connectors



Secure LC

Prevents unauthorized access or changes

Compatible with all standard LC Passive or Active equipment ports

OFP's patented **Secure LC connectors** are designed to prevent unauthorized and inadvertent changes for critical applications such as Datacenters and Secure IT Networks, providing 'physical port security'



Applications

- Secure Military IT networks
- Secure Federal IT networks
- Healthcare & Educational networks
- Commercial Enterprise networks
- Datacenters

Features

- Secure LC locks into ports once plugged. Keyed extraction tool required for removal
- 8 key combinations with separate colors
- Plugs to standard LC Duplex & Quad adaptors and transceiver interfaces
- Compact Uni-body Duplex format
- Administrator key tool option
- Dust cap - discipline feature

Optical Fiber Packaging Ltd.

Holland Centre
Holland Road Industrial Estate
Haverhill
Suffolk
England CB9 8PR UK

Phone: +44 (0) 1440-766636
E-mail: sales@ofpgco.com

www.ofpgco.com



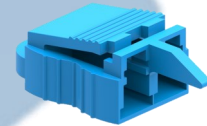
Secure LC Connectors



Secure LC Keyed Extraction Tool

The **Extraction Tools** allow for easy manual connector removal, even from very high density patch panels. They are colour coded to match the connector key type.

One additional product novelty, is the unique dust-cap that has to be clipped on when extracting a connector, promoting professional fibre cleanliness discipline.



Secure LC Port Blockers

The **LC port blockers** help ensure that all empty ports are protected from unauthorized access. This allows network engineers to physically lock closed empty ports



Optical Specifications

Insertion Loss: 0.1 dB typical for Singlemode, 0.20 dB typical for Multimode

Return Loss: ≥ 55 dB typical for SM- UPC

Durability: <0.2 dB change 500 cycles for Singlemode, 0.2 dB change 500 cycles for Multimode

Operating Temperature: -40°C to $+85^{\circ}\text{C}$

Ferrule Criteria: $125.5\ \mu\text{m}$ +/-0 Concentricity: $\leq 1\ \mu\text{m}$ for Singlemode. $127\ \mu\text{m}$ nominal for Multimode

Keyway Options

Key/Housing Colours:

Black

Red

Green

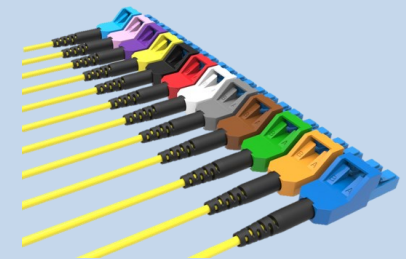
Blue

Grey

White

Orange

Yellow



Boot Colours: Black, White, Beige, Aqua, Blue

Boots and crimps fit Fig 8 & 2.8mm round cables

Optical Fiber Packaging Ltd.

Holland Centre
Holland Road Industrial Estate
Haverhill
Suffolk
England CB9 8PR UK

Phone: +44 (0) 1440-766636
E-mail: sales@ofpgco.com

www.ofpgco.com