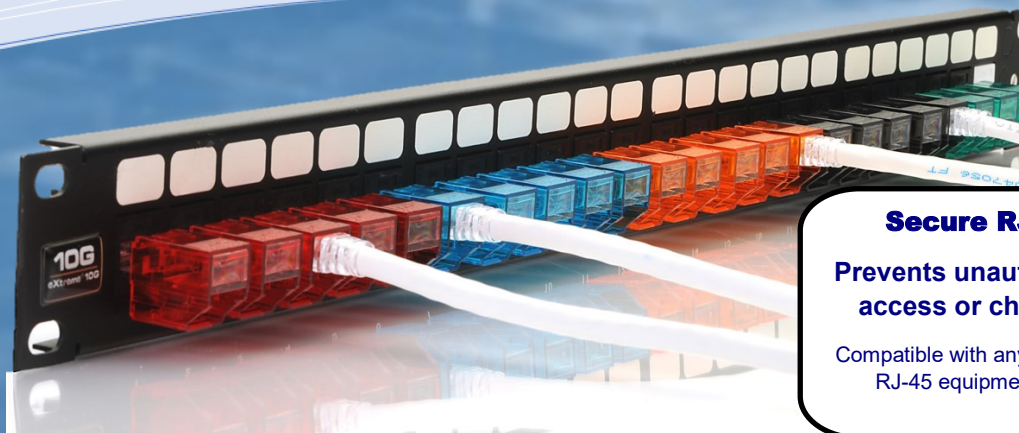


DFP

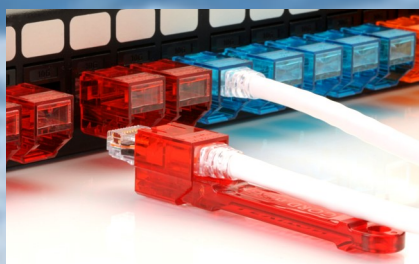
Secure Locking Keyed RJ45 Assemblies



Secure RJ45

Prevents unauthorized access or changes

Compatible with any Standard RJ-45 equipment port



Easy to connect and remove

Step 1: Push to plug & lock

Step 2: Use key tool to extract connector

Applications

- Secure Military IT networks
- Secure Federal IT networks
- Healthcare & Educational networks
- Commercial Enterprise networks
- Datacenters

Features

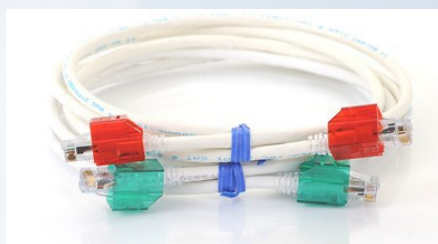
- Physically locking connector
- Multiple key configurations for access control and tamper-proofing
- Compatible with industry standard passive and active RJ45 ports
- Available in eight key colors to allow easy identification and administration of the network



Optical Fiber Packaging Ltd.

Holland Centre
Holland Road Industrial Estate
Haverhill
Suffolk
England CB9 8PR UK

Phone: +44 (0) 1440-766636
E-mail: sales@ofpgco.com



www.ofpgco.com



Secure Locking Keyed RJ45 Assemblies



SRJ45 Keyed Extraction Tools

The **Locking Secure RJ connectors (SRJ)** can only be unplugged with matching colour-keyed extraction tools. These tools automatically de-latch the RJ connectors from the ports, limiting disturbance and damage to adjacent connector channels in dense applications. The **Secure RJ Cable Assemblies and matching Extraction Tools** are available in eight key ways and colours.



SRJ Port Blockers

Complimenting the SRJ connectors, OFP provides **Secure RJ Locking Port Blockers** acting as 'locking dust caps.' The port blockers ensure empty network ports can be 'locked-out,' preventing the unauthorized insertion of patch cables.



Optical Fiber Packaging Ltd.

Holland Centre
Holland Road Industrial Estate
Haverhill
Suffolk
England CB9 8PR UK

Phone: +44 (0) 1440-766636
E-mail: sales@ofpgco.com

Specifications

Cable types: CAT6 or CAT6A

Housing Keyway Colours:

- **Black**
- **Clear**
- **Yellow**
- **Orange**
- **Red**
- **Blue**
- **Green**
- **Purple**



RoHS Directive Compliant. Compliant with TIA-568-C.2 Requirements.

www.ofpgco.com